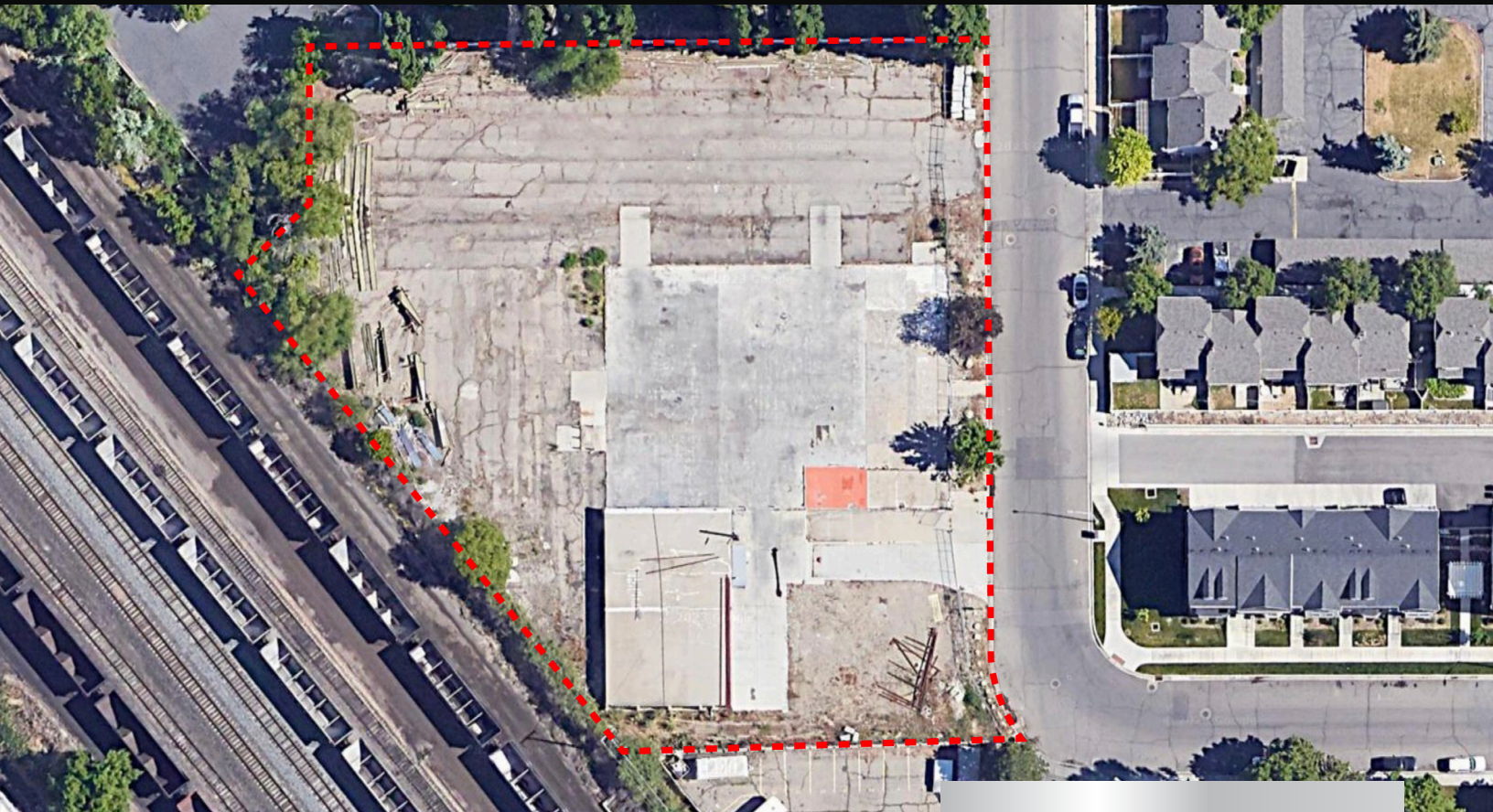


OPPORTUNITY ZONE



1122 SOUTH 900 EAST PROVO, UTAH

Great Opportunity Zone opportunity in Provo City. Located close to Provo City CBD, the property is currently zoned M1 (Light Industrial) with the opportunity to rezone to residential or mixed use. Fantastic site for an owner/user or investment redevelopment opportunity. Great access by I-15 and Highway 89.



ASKING PRICE

\$1,750,000

PARCEL SIZE

1.587 ACRES

ZONING

M1 (Light Industrial)



**SCANDIA
COMPANY**

SCOTT BENNION

scott.bennion@scandiacompany.net

801 718 3771